

IONIQ 5



IONIQ

Power your world.

Breathtakingly beautiful and amazingly advanced, the IONIQ 5 is redefining the way people look at electric cars. Elegantly combining innovative concept car design with amazing performance, environmentally friendly materials, and an astonishing array of smart tech – this all-electric midsize SUV is a game changer. Equipped with an 800-volt battery system for ultra-fast charging and delivering a driving range of up to 481 km* – it has been created to take you farther – with faster charging and sleeker style.

* WLTP (Worldwide Harmonised Light Vehicle Test) range. These figures may not reflect real life driving results, which will depend upon a number of factors including the starting charge of the battery, accessories fitted (post-registration), variations in weather, driving styles and vehicle load. 481km Range is based from the 2WD 72 kWh model with 19" wheels.



IONIQ 5 Limited with Solar Roof in Gravity Gold shown

Entry.

ENTRY KEY SPECIFICATIONS
MOTOR AND BATTERY CAPACITY
58 kWh 2WD with 125 kW motor
72.6 kWh 2WD with 160 kW motor
72.6 kWh AWD with 225 kW dual motors (combined output)
SAFETY
7 airbags
Rear view camera
Front & rear parking sensors
Tyre Pressure Monitoring System (TPMS)
Electronic Stability Control (ESC) including:
Anti-lock Braking System (ABS)
Brake Assist System (BAS)
Downhill Brake Control (DBC)
Electronic Brakeforce Distribution (EBD)
Hill-start Assist Control (HAC)
Traction Control System (TCS)
Vehicle Stability Management (VSM)
Hyundai SmartSense™ including:
Driver Attention Warning (DAW)
Forward Collision-Avoidance assist (FCA) – Car, Pedestrian & Cyclist
High Beam Assist (HBA)
Lane Keeping Assist (LKA)
Lane Following Assist (LFA)
Blind-spot Collision Avoidance assist (BCA)
Rear Cross-traffic Collision Avoidance (RCCA)
Smart Cruise Control (SCC) with Stop & Go
Rear Occupant Alert (ROA)
Safe Exit Assist (SEA)
Power child locking system
INTERIOR AND TECHNOLOGY
Rear seat split folding – 60:40
2nd row manual air vent controls
Driver seat 8-way electric sliding, reclining, height and lumbar adjustable
2x USB ports (1st row), 2x USB ports (2nd row)
Leather appointed ³ steering wheel
Cargo blind
Wireless smartphone charger ⁵
Dual zone climate control air-conditioning
ISOFIX child restraint anchors (rear outboard seats)
Smart key with push button and remote engine start
Electronic Parking Brake (EPB)
Drive modes – Comfort, Eco & Sport
12.3” touchscreen display with Apple CarPlay® and Android Auto™ ² compatibility
Bluetooth® ⁴ (phone & audio streaming) with voice recognition
12.3” TFT LCD with trip computer & digital speedometer
Steering wheel mounted phone & audio controls
EXTERIOR AND TECHNOLOGY
19” alloy wheels
LED Daytime Running Lights (DRL)
LED head lights
LED tail lights
LED side repeaters integrated into side mirrors
Heated side mirrors
Electric folding side mirrors

1. **Hyundai SmartSense™** is a registered trademark of Hyundai Motor Company. Safety features are not a substitute for attentive driving. 2. **Apple CarPlay** functionality requires software update. Apple CarPlay™ requires iPhone 5* or subsequent model (lightning cable) in order to operate. Apple® and iPhone® are registered trademarks of Apple Inc. **Android Auto** requires a device with Android 5.0 operating system or subsequent version, and USB cable in order to operate. Android is a trademark of Google Inc. 3. **Leather appointed** may contain elements of genuine leather, polyurethane leather (leather substitute) or man-made materials, or a combination thereof. 4. **Bluetooth®** is a registered trademark of Bluetooth SIG, Inc. Please check your Bluetooth® device's capabilities to ensure compatibility. 5. **Wireless smartphone charger** requires a Qi-enabled smartphone or adaptor to operate.



19” alloy wheels



12.3” touchscreen display with Apple CarPlay and Android Auto™² compatibility



4 x USB charging ports and wireless smartphone charging



Blind-spot Collision Avoidance assist (BCA)

Elite.

ELITE KEY SPECIFICATIONS ABOVE ENTRY
MOTOR AND BATTERY CAPACITY
72.6 kWh 2WD with 160 kW motor
INTERIOR AND TECHNOLOGY
Leather appointed ³ seats
Heated front seats
Heated second-row outer seats
Heated steering wheel
Electric front driver & passenger seats
Bose premium audio
EXTERIOR AND TECHNOLOGY
Interior LED mood lighting
20” alloy wheels
Liquid silver exterior accents
Rear privacy glass
Bi-LED head lights
LED front centre garnish light
Automatic flush door handles

Limited.

LIMITED KEY SPECIFICATIONS ABOVE ELITE
MOTOR AND BATTERY CAPACITY
72.6 kWh AWD with 225 kW dual motors (combined output)
SAFETY
Hyundai SmartSense™ including:
Remote Smart Park Assist system (RSPA)
Surround View Monitor (SVM)
Parking Collision Avoidance-rear (PCA)
Blind-spot View Monitor (BVM)
INTERIOR AND TECHNOLOGY
Air ventilated front seats
Integrated Memory System (IMS) – driver's and passenger's seats
Power adjustable driver and passenger seat - 12-way (including 2-way lumbar support and cushion extension)
Power sliding rear seat
EXTERIOR AND TECHNOLOGY
Vision roof
Solar dual contact roof (optional, exclusive of Vision roof)
Smart power tailgate



Solar dual contact roof (optional on Limited)



20” alloy wheels



Heated 1st & 2nd row (outboard) seats



Premium Bose sound system with eight speakers.



Surround View Monitor (SVM)



IONIQ 5 Limited with Solar Roof in Gravity Gold shown

Distinctive. Iconic. Pure.

The IONIQ 5's pure design is a refreshing take on electric vehicles, stripping away complexity to celebrate clean lines and minimalistic structures. Smooth and seamless with a strong focus on minimalism, Hyundai's first-ever clamshell hood spans the entire width of the car – minimising panel gaps for a clean, high-tech look. The crown jewels of the iconic front-end presence are the distinctive LED headlamps with their 256 Parametric Pixels – unique jewel-like design elements that will feature on the exterior of all future IONIQ models.



IONIQ 5 Limited with Solar Roof in Gravity Gold shown

Concept car design in series.

The sporty sensuality of the IONIQ 5 is homage to Hyundai's design heritage, reimagined for the future. It is inspired by the futuristic design of the Concept 45 EV – unveiled at the 2019 International Motor Show (IAA) in Frankfurt – which in turn pays homage to one of the most iconic vehicles in Hyundai's history: the 1974 Pony Coupe Concept. Seen from the side, we see a futuristic reinterpretation of the Pony's fast-back style and short overhang. Precisely modelled surfaces and shapes give the IONIQ 5 an angular, almost geometric appearance. Taunt and perfectly proportioned, the side graphics are highlighted by flush door handles that enhance the clean look and aerodynamics.



IONIQ 5 Limited with Solar Roof in Gravity Gold shown



Designed for beauty, but engineered for efficiency.

As eye-catching as it is, the IONIQ 5 has also been carefully engineered for enhanced aerodynamics – leading to a phenomenal 0.288 drag coefficient, one of the best in its class. Aerodynamic components like active front air flaps, a full under-body covering and the rear spoiler minimise drag and maximise performance. The spoiler's hidden holes induce flow pressure to the rear glass and improve the clean flow characteristics of the wake. Naturally all this aerodynamic efficiency helps you go farther on every single charge, but it also makes every ride more pleasant – delivering optimal quietness through wind noise reduction.



IONIQ 5 Limited with Solar Roof in Gravity Gold shown

Design details.

IONIQ 5's progressive design represents a departure from past norms, exploring a new design freedom offered with a dedicated BEV platform. This is the redefinition of timeless design, a theme that will expand as the IONIQ line-up grows.



Front bumper with active air flap.

The front bumper is defined by the eye-catching V-shape, which emphasises the kinetic cube LED headlamps. The active air flap integrated above the skid plate enhances the high-tech look in the front – as well as improving energy efficiency when closed – and cooling vehicle parts as needed when open.



Aero-optimised alloy wheels.

The exclusive aero-optimized wheels echo the Parametric Pixel design theme, harmonising beautifully with the sleek profile. They are offered in a super-sized 19" or 20" versions, the largest rims ever fitted to a Hyundai EV.



Parametric Pixels rear light signature.

The innovative LED lighting design can be found in the back as well. The evocative design of the rear bumper and hatch harmonises powerfully with the rectangular Parametric Pixels rear light signature and slice rear reflectors.



Dual contact solar roof.

Bright idea. When sunlight is absorbed by the rooftop solar panels, electricity is produced, which is then the stored in both the 12V starter battery and the high voltage battery to extend the driving range.



IONIQ 5 Limited interior shown.

IONIQ 5 Limited interior shown.



Live, drive, work, relax.

Inside the IONIQ 5, the lines between living space and moving space are being blurred. Our new, dedicated EV platform gave us the opportunity to re-create the interior as a whole new in-car experience. A larger flat floor, highly adjustable front seats that can be fully reclined, and a flexible centre console that can be moved throughout the cabin, all make for an extraordinary experience – and maximise the sense of interior openness. What's more, environmentally friendly materials have been used throughout the cabin. The seats are clad in an available eco-processed leather that is dyed and treated with plant oil extractions from flaxseed. Raw materials extracted from sugar cane are used on the headliner, carpet and seat covers – a solution that is both recyclable and beautiful. Other soft furnishings consist of textiles derived from wool and poly yarns, as well as material woven from fibres made from recycled used PET plastic bottles. Surfaces such as the dashboard, switches, steering wheel and door panels are coated in a polyurethane bio paint composed of oils from rape flowers and corn – another contribution to sustainability in our manufacturing processes.



SUV versatility for electric mobility.

Designed to fit everything you and your busy life can throw at it, the highly-versatile IONIQ 5 offers plenty of room for both passengers and cargo. IONIQ 5's 3000-mm wheelbase offers the spaciousness of a large passenger car in a mid-size SUV – providing you with an outstanding trunk capacity of 527 litres. And with the 60:40 foldable seats both folded down, you get almost 1,600 litres of cargo space – perfect for weekend escapes or transporting bulky items. And if that's still not enough: IONIQ 5 also gives you the capacity to tow a trailer weighing up to 1,600 kg. We also took the space where the petrol engine would normally be located – and made some extra space for your stuff. A second boot in the front provides up to 57 litres of additional cargo space. So, no matter where life's adventures take you, IONIQ 5 is there for you every step of the way, pushing the envelope of an electric mobility lifestyle.



Technologically advanced, eco-friendly and plugged into today's customers' needs, the IONIQ 5 offers masterful integration of digital and analogue technologies. In the driver's space, the past, present and future have been brought together to create a harmoniously pleasant driving experience. The centrepiece of the sleek modular dashboard is the extra wide integrated display, which combines a 12.3" full-touch infotainment screen and a 12.3" digital cluster for a high tech look that comes standard.

The screens also display a wide range of EV-related information while driving, such as battery status and nearby charging stations. And for a touch of low-tech style, there's also an old school magnetic board to the left of the digital cluster where you can hang up notes or pictures with mini-magnets. Everything else you need is also right at your fingertips. The elegant rotary type shift-by-wire controller is located on the steering column, and you can easily adjust the level of regenerative braking through the paddle shifters mounted on the steering wheel.





IONIQ 5 Limited interior shown



Elite & Limited models only



Apple CarPlay™ and Android Auto™ smartphone mirroring.

Making life as connected as you want to be.

The IONIQ 5 is equipped with a stellar range of intuitive smart tech to make life inside as connected as you want to be. Enjoy the seamless integration of advanced, intuitive technologies for an enhanced digital experience. And with Apple CarPlay™ and Android Auto™ on board as well, you can plug in your smartphone and mirror your apps and music up onto the big 12.3" infotainment touchscreen.

Apple CarPlay™ is a registered trademark of Apple Inc. Android Auto™ is a registered trademark of Google Inc.

Technology highlights.

The IONIQ 5 is redefining the way people see electric vehicles, providing a truly new experience with its innovative use of interior space and cutting-edge smart tech.



12.3" colour full TFT driver information display.

The fully digital 12.3" cluster displays essential information like speed and battery state of charge. It projects virtual information like turn-by-turn navigation or lane safety warnings. This allows you to process information quickly while keeping your eyes – and attention on the road.



Wireless charging.

There's a high-speed wireless charger port in the moveable centre console the Universal Island – that can slide back as much as 140 mm, which means second-row passengers can also enjoy access to the cup holders, USB ports and phone charger. The 15-watt unit features a cooling function that prevents smartphone overheating for added safety.



IONIQ 5 Limited in Gravity Gold shown

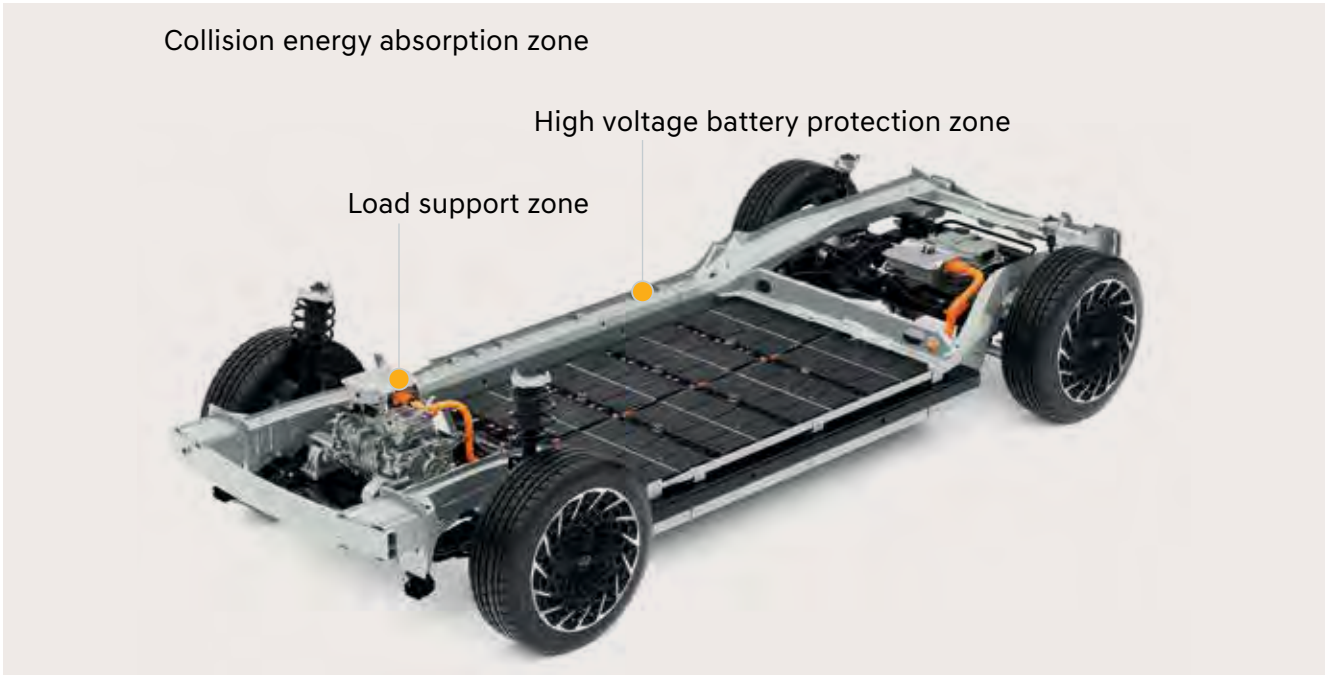
Next level electric performance.

Elegantly combining amazing performance with an astonishing array of smart tech – and delivering a driving range of up to 481 km – this all-electric midsize SUV is a game changer. Depending on your mobility needs and performance wants, IONIQ 5 is available with a range of configurations. Choose from two battery pack options: 58 kWh (Standard Range) or 72.6 kWh (Long Range).

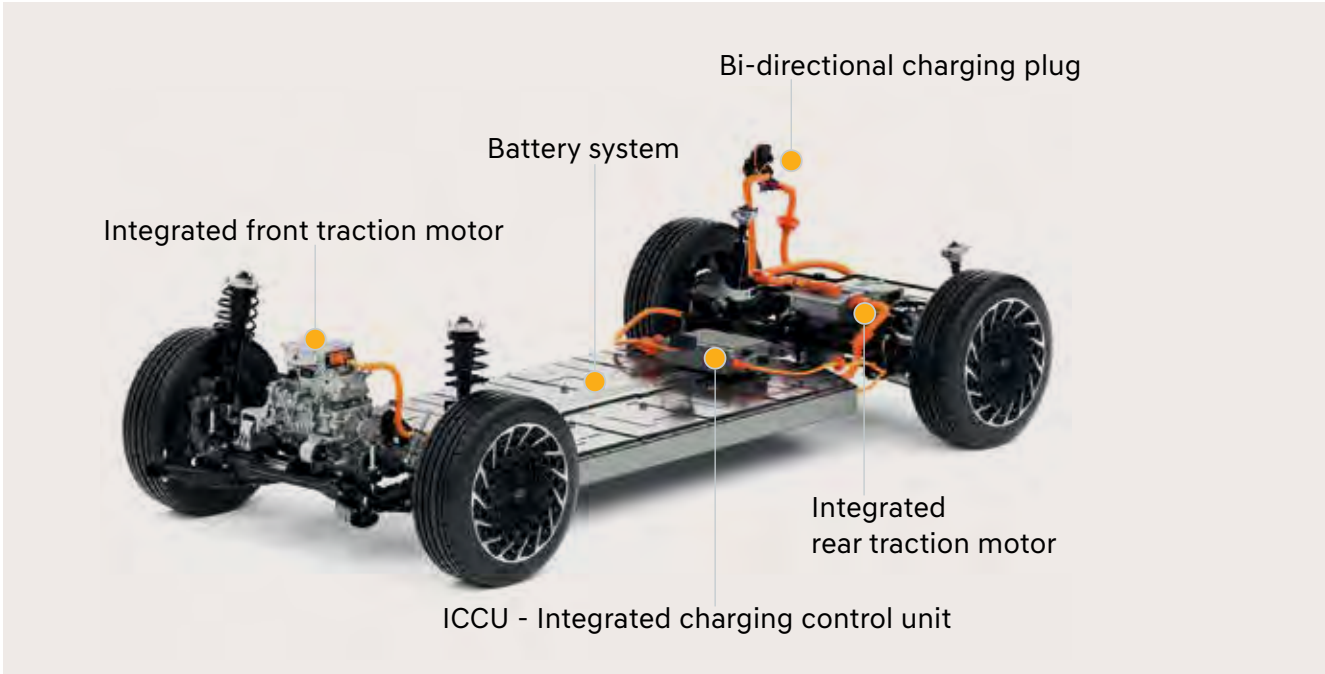
Furthermore, you can choose an all-wheel drive version with dual electric motors or a rear-wheel drive version with a single electric motor. But no matter what configuration you choose, the IONIQ 5 delivers sporty acceleration: going from 0 to 100 km/h in just 5.2 seconds in the all-wheel drive version – and 7.4 seconds in the rear-wheel drive version with the 72.6 kWh battery. Both deliver a top speed of 185 km/h. Available with Hyundai's signature all-wheel drive system HTRAC, the IONIQ 5 can also be equipped with capabilities that will keep you moving in all kinds of conditions.

Your digital journey starts here.

Whatever the journey, time seems to fly by when you have a reliable travel companion along for the ride like IONIQ 5's 12.3" infotainment system and the available premium speakers from Bose. The touchscreen is easy to operate and syncs effortlessly with your smartphone to provide you with the entertainment and information you need while on the road. And with Smart Cruise Control, highway driving is a lot more convenient.



The multi-frame structure and new safety technologies work in unison to protect the passengers and the battery. A collision energy absorption zone disperses crash forces along energy load paths in the crush zone whose structures are designed to deform in a predictable manner, thus mitigating impact energy while protecting cabin occupants and the 800V battery. The load support zone in the front of the dashboard includes an evasion structure to minimise impact energy on the PE system and battery. The high voltage battery that is incorporated into the vehicle floor is shielded by an ultra-high strength steel support structure to improve collision safety.

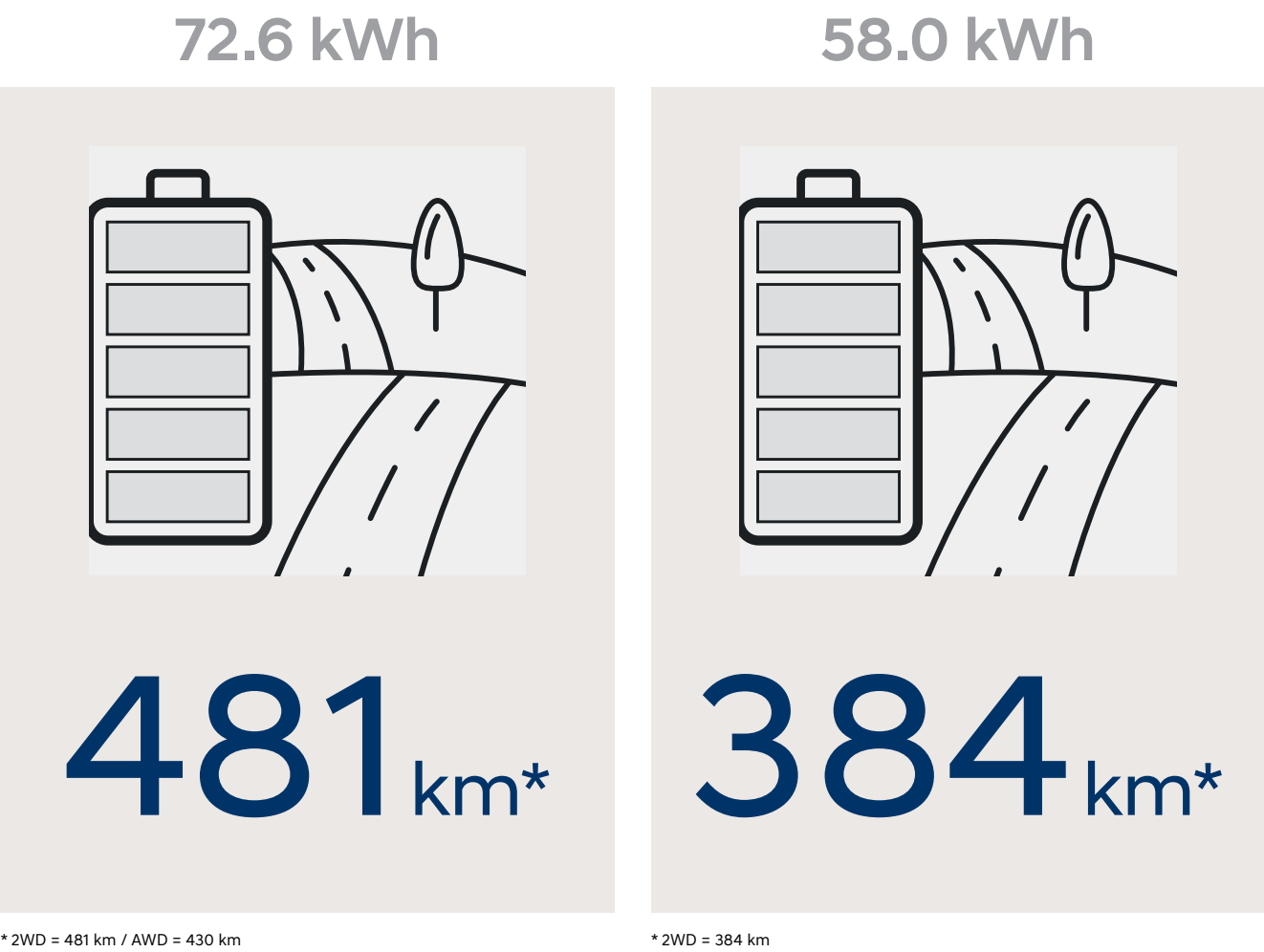


Hyundai's new Power Electrical System (PE) serves as the industry's new benchmark for efficiency. Composed of the drive motor and decelerator, inverter and battery, the PE system is the EV's core – replacing the conventional internal combustion engine so to speak. Highlights of this next-generation system include the advanced integration of the motor, decelerator and inverter into a single unit as well as a standardised battery module. This integration extends the driving range and raises system efficiency to industry-leading standards. The innovative Integrated Charging Control Unit (ICCU) utilises high voltage Silicone Carbide to supports 800V charging. It also makes V2L charging possible.

Batteries/Range/Performance.

Pick your power and preferred range. The IONIQ 5 is available with two battery options: 58 kWh (Standard Range) or 72.6 kWh (Long Range). Furthermore, you can choose an all-wheel drive version (AWD) with dual electric motors or a rear-wheel drive version (2WD) with a single electric motor. The 72.6 kWh battery delivers 160 kW in 2WD and 225 kW (225 kW) in AWD. The 58 kWh battery provides 125 kW in a 2WD powertrain.

*Range according to WLTP cycle. Driving range may vary slightly depending on road conditions, your driving style and the temperature. It is also is dependent on the type of tyres equipped.



Regenerative braking.

Equipped with cutting-edge technology for intelligent driving, the IONIQ 5's regenerative braking system charges the battery while driving by using the electric motor to slow the vehicle. You can control the level of energy that the system regenerates and stores in the battery by adjusting the level of regenerative braking with the steering wheel-mounted paddle shifters. The higher the level, the more the car slows and charges the battery when you take your foot off the accelerator. Holding the left paddle shifter activates maximum strength of regenerative braking and you can slow the car to a complete stop in this way without having to press the conventional brake pedal.

Additionally, the Smart Regenerative Braking System utilises the front radar sensors to automatically control the level of regenerative braking to react to the traffic ahead, slowing you down accordingly. There is also a one pedal mode, which allows acceleration/deceleration/stopping using only the gas pedal. Simply tap on left paddle shifter to enter fourth stage to enable the one pedal function and the regenerative braking stage symbol changes to the one pedal symbol.





IONIQ 5 Limited in Gravity Gold shown



IONIQ 5 Limited in Gravity Gold shown

Ultra-fast charging / Fast charging.

Enjoy the speed and convenience of best-in-class charging times. No time to wait? Don't worry, you can add 100 km of range in 5 minutes at an ultra-fast charging station – and charge from 10 to 80% in just 25 minutes! Hyundai's world's-first patented technology supports both 400V and 800V charging infrastructure without the need for additional components or adapters. Which means you can get in and out of rapid charging stations faster, because you have the flexibility of using a different charger if one type is occupied.



72.6 kWh Long Range Battery (Ultra-fast charging)

300 kW DC station: Charging time 25 minutes from 10 to 80% Range added from 5 minutes of charging: 95 km.



58 kWh Standard Range Battery (Ultra-fast charging)

300 kW DC station: Charging time 25 minutes from 10 to 80% Range added from 5 minutes of charging: 80 km.



72.6 kWh Long Range Battery (Fast charging)

50 kW DC station: Charging time 1 hour from 10 to 80% Range added from 5 minutes of charging: 28 km.



58 kWh Standard Range Battery (Fast charging)

50 kW DC station: Charging time 47 minutes from 10 to 80% Range added from 5 minutes of charging: 27 km.

Home charging / AC charging.

Depending on your grid connection at home or the type of charging station you have access to, the IONIQ 5 gives you a range of flexible charging possibilities aside from ultra-fast DC charging. You can charge at home overnight to take advantage of off-peak rates or top up at the grocery store when you're shopping – the powerful up to 10.5 kW on-board charger gives you a range of flexible possibilities.



The charging time for the 72.6 kWh Battery is 11 hours on a 7.2 kWh charger. And for the 58 kWh battery, charging time is 8 hours.



IONIQ 5 Limited in Gravity Gold shown

Vehicle-to-Load technology.

Simply plug in your laptop or electric bike to charge them, just like at home. IONIQ 5's innovative Vehicle-to-Load technology (V2L) lets you make the most of sustainable electric mobility. And if you're out at the beach or camping, you can charge your electric scooters or run your camping equipment using a converter that plugs into the bidirectional exterior charging port. The outside port provides up to 3.6 kW power even when the vehicle is turned off.

* V2L functionality requires adaptor sold separately.



IONIQ 5 Limited in Gravity Gold shown



IONIQ 5 Limited in Gravity Gold shown on left
i30 1.0T Elite in Dark Knight shown on right

Hyundai SmartSense™



Forward Collision-Avoidance Assist (FCA).
Stops your car fast, even if you're distracted. FCA alerts you to slowing or stopped vehicles as well as cyclists and pedestrians in your path – and automatically applies full braking power if you don't react in time.



Lane Following Assist (LFA).
Keeps you centred and safer. When activated, it keeps the vehicle centred in its lane at speeds between 0 and 185 kilometres per hour on highways and city streets.



Lane Following Assist (LFA).
Keeps you centred and safer. When activated, it keeps the vehicle centred in its lane at speeds between 0 and 185 kilometres per hour on highways and city streets.



Blind Spot Collision-Avoidance Assist (BCA).
Delivering more safety in dense traffic, BCA will warn you and automatically apply the left or right brakes and control the steering when a vehicle is detected in your blind spot and you begin to change lanes.



Leading Vehicle Departure Alert (LVDA).
This clever feature for city driving alerts the driver when the vehicle in front departs from an idle state, like at a stoplight or in a traffic jam.



Rear Cross-Traffic Collision-Avoidance Assist (RCCA).
Perfect for parking lots. When reversing out of areas with low visibility, the system not only warns the driver if vehicles approach from the side – it also applies the brakes automatically.



High Beam Assist (HBA).
Less stress and maximum visibility. Detects oncoming vehicles and vehicles in the same lane ahead and switches to low-beam as appropriate, reactivating the high-beam when no vehicles are detected.



Intelligent Speed Limit Assist (ISLA).
This semi-autonomous driving features uses navigation data and adjusts vehicle speed to match the speed limit (when activated).



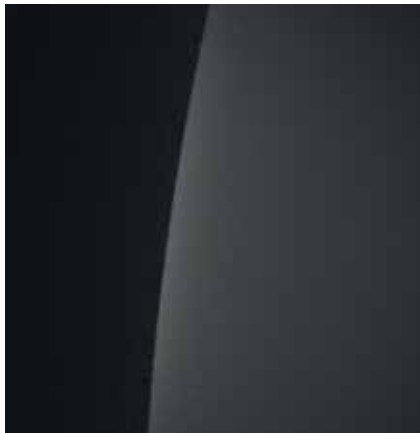
Driver Attention Warning (DAW).
When a pattern of fatigue or distraction is identified, the system gets your attention with an alert and pop-up message suggesting a break.

Exterior colours and wheels.

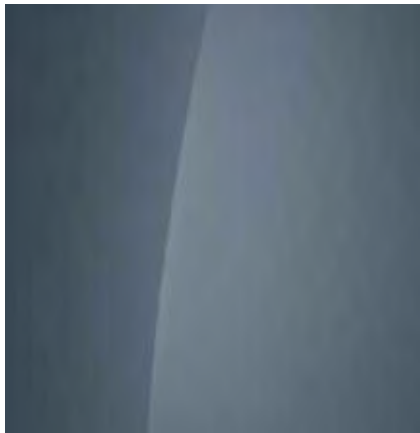
Choose from nine exterior colours, including five new nature-inspired hues exclusive to the IONIQ 5. Two options are available with a matte finish. The aero-optimised alloy wheels have been designed exclusively for the IONIQ 5. They echo the design theme, exuding an exclusive electric flair and harmonise beautifully with the sleek profile. Choose from a 19” and 20” version.



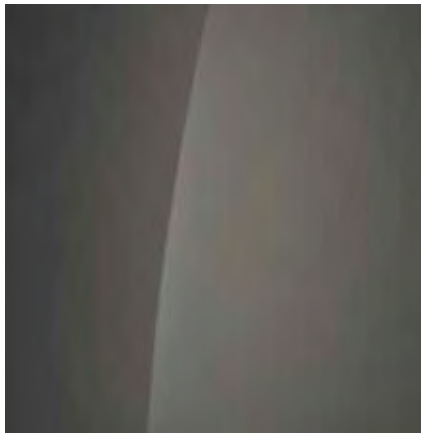
Atlas White



Phantom Black Pearl



Lucid Blue Pearl



Mystic Olive-Green Pearl



Digital Teal-Green Pearl



Gravity Gold Matte*



Cyber Gray Metallic



Galactic Gray Metallic



Shooting-Star Gray Matte*



19" alloy wheels



20" alloy wheels

* Matte finishes required special care whilst cleaning including the use of special car cleaning products and restricting the use of automatic car washes. Please see www.hyundai.co.nz/matte-finish-care for further information.

Hyundai's commitment to you

Our promise

We understand your decision to purchase one of our vehicles is not being made lightly and we thank you for putting Hyundai on your list. We know that by the time you decide which vehicle you want to purchase, you'll have had a good look at what's on offer in the market, and carefully weighed up the pros and cons of each. We hope you make the right decision for yourself. If you do decide to choose Hyundai, that won't be the end, it'll just be the start. Our goal is to live up to the confidence you've shown in us, by giving you the best customer service experience in New Zealand.

We call this the Hyundai Ownership Experience – which is a slightly corporate way of saying “we promise to look after you”.

The Hyundai Ownership Experience will actually start before you even have the keys in your hand, as your Hyundai dealer takes you through the things you need to know to get the most out of your new vehicle.



Personal handover

When you come in to pick up your new Hyundai, your dealer will take you through it from bumper to bumper. They'll show you where everything is and how everything works. They'll make sure you're across all those little things most people forget to ask about, like:

- » How to set up your mobile phone to work with Bluetooth
- » Where the tool kit is
- » How to connect and use your Apple CarPlay® or Android Auto®.
- » Where to find the first aid kit
- » How to register, setup and connect to Auto Link

They'll also check there's either a full tank of fuel or it's fully charged, that the vehicle is spotless inside and out, and that any accessories you specified are fitted just so.

This is also our opportunity to introduce you to the service team, who'll be looking after you in the years to come.

“THE DEALER EXPLAINED THE TUCSON TO ME AND WAS PATIENT WHEN WE HAD QUESTIONS.”

— GARY COCKRAM HYUNDAI CUSTOMER FROM CHRISTCHURCH

Meet the rest of the family

There's a good reason why your dealer will introduce you to the rest of the family. They're the people entrusted to be hands-on through your Hyundai Ownership Experience – the team who'll look after you and your vehicle when you come in for scheduled servicing.

There's no charge for the first service, and it happens after the first month on the road. Then it happens every 10,000 / 15,000 km*.

It's always good to be able to put a face to a name. And knowing them means you can call personally to discuss any concerns. Our people are experts at what they do and keen to show you how good they are. It's a pride thing and we encourage it.

A superb warranty and Roadside Assistance

Every new Hyundai is protected by our 3 year / 100,000 km factory warranty. In a nutshell, if there's any manufacturing issues, we'll fix them. But there's more.

Hyundai Roadside Assistance is included as part of our new vehicle warranty. It means if you should have an accident, puncture a tyre or run out of fuel anywhere in New Zealand, we'll send someone to get you up and running again – 24 hours a day, 365 days a year.

Extending your warranty beyond the factory period can make your ownership experience better yet. It's certainly worth considering. Our extended warranties can later be on-sold with the vehicle, something sure to increase its eventual resale value.



Servicing from trained Hyundai experts

Regular scheduled servicing within our network has real benefits.

Our specialist technicians use Hyundai diagnostic equipment to spot things that may be missed by the untrained eye.

We use genuine Hyundai parts, of course. These parts are built and tested to be specifically correct for your vehicle and are covered by a 1 year / 20,000 km warranty.

Your safety and the safety of your passengers are our number one priority. We can't vouch for the safety or performance of non-Hyundai parts. They only have to be slightly off or incorrectly installed and the integrity of your vehicle will be compromised.

If the cost of servicing is a concern for you, committing to a pre-paid service contract from day one will cost you less in the long run. You can sign up for these to cover your servicing needs for every service interval, which is every 10,000 / 15,000 km* or yearly (whichever happens first). You can do this for as many years as you want, and they're available for any Hyundai, no matter how old.



*Servicing for petrol turbo models is every 10,000 km or 12 months (whichever occurs first)

Insurance

Our insurance offering is part of Hyundai's commitment to improving your ownership experience.

Hyundai Insurance offers several exclusive benefits not available with other motor vehicle policies. For example, if your Hyundai is still in factory warranty, was purchased from a Hyundai dealer in New Zealand and is damaged beyond repair, we'll replace it with a brand new one*.

There's no excess if your glass is broken (up to \$2,000 cost), and we'll cover (up to \$1,500 cost) for the trailer you were towing if that's damaged*.

You can be sure only guaranteed, genuine Hyundai parts will be used in repairs**, and that only approved repairers will be working on your vehicle.

We also offer a Hyundai Insurance specific 24 hour assistance number: 0800 123 266.

*See your Hyundai dealer for full terms and conditions.
**Applies to new vehicles for five years.

Hyundai Fleet

If you're looking for the right vehicles for your business, Hyundai has the perfect fleet solution for you.

Whatever your business size or requirements, you can get the job done by choosing from Hyundai Fleet's diverse range of models and trucks, all of which offer the latest in technology, efficiency, safety and style. And as a Fleet customer, you have the flexibility of a range of ownership and leasing options, as well as tax benefits and great value servicing.

So, from the city loving i20 to the cargo carrying iLoad, our fleet services can provide the right vehicles to help drive your business forward. For more information visit www.hyundai.co.nz/fleet



In the company of Kiwis

The Hyundai brand has grown rapidly into a global auto industry powerhouse. But first and foremost, Hyundai New Zealand is a New Zealand company.

Hyundai New Zealand is 100% kiwi owned and all our Hyundai dealers are 100% NZ operated. That's something we're pretty proud of.

This structure gives you the best of both worlds. The benefits of global resources and the huge investment in Research & Development that Hyundai makes, combined with our local commitment and understanding.

We're also very aware of what it means to be a New Zealand company. Our commitment to being a good Kiwi citizen starts with our treatment of customers and extends out into their communities.

We've actively supported the National Agricultural Fieldays for over a decade. We sponsor Hyundai Country Calendar, put money into NZ sailing, and are major sponsors of the Spirit of

Adventure Trust. We're also extremely proud of our New Zealand sponsorship of Kiwi rally driver, Hayden Paddon.



Our sponsorships allow us to offer customers the chance to join us as VIP guests at many of our events, including on board the Spirit of New Zealand and at Fieldays. Look out for these invites from time to time.

The Hyundai Experience will continue to grow and expand. We really want to give you the most rewarding experience you've ever had with a company.



Hyundai Country Calendar visits Doug Avery and his mates on his North Island farm for a yarn.

The Pinnacle Programme

The Pinnacle Programme is a unique scholarship, backed by Hyundai New Zealand, which provides talented young New Zealanders between the ages of 15 and 18 with the foundations for future success. The Programme is open to young kiwis with talent in all areas of endeavours, including, but not limited to, art, sport, science and business.

WWW.PINNACLEPROGRAMME.CO.NZ



Future New Zealand leaders as part of the Pinnacle Programme spend 21 days on New Zealand's iconic Outward Bound programme in Anakiwa, at the top of the South Island.

Hyundai Ambassador Team

Speaking of 0800 numbers, if you dial 0800 HYUNDAI (498 632), you'll be talking directly to one of our Hyundai Ambassador Team members in New Zealand. We operate a local call centre. Our team are trained to support you with any concerns, and they'll be able to help you out with anything you need them to.

We respond to every request, no matter how big or small, as quickly as we can. That's the New Zealand way of doing things, and it's our way too.

If it's an emergency you'll be put straight through to our Roadside Assistance team, who are trained to deal with any situation and will get someone out to you as quickly as possible if that is what is required.

JOIN US ON WWW.FACEBOOK.COM/HYUNDAINZ

Specifications

CAR TYPE	IONIQ 5 58 kWh 2WD	IONIQ 5 72 kWh 2WD	IONIQ 5 72 kWh AWD	IONIQ 5 72 kWh Elite 2WD	IONIQ 5 72 kWh Limited AWD
REAR ENGINE:	Permanent Magnet Synchronous Motor (PMSM)				
Maximum power	125 kW	160 kW	155 kW	160 kW	155 kW
Maximum torque	350 Nm	350 Nm	350 Nm	350 Nm	350 Nm
FRONT ENGINE:	Permanent Magnet Synchronous Motor (PMSM)				
Maximum power	-	-	70 kW	-	70 kW
Maximum torque	-	-	255 Nm	-	255 Nm
TRANSMISSION:					
3-levels of brake regeneration including smart mode	•	•	•	•	•
Paddle shifters for brake regeneration levels	•	•	•	•	•
HIGH VOLTAGE BATTERY:					
Battery capacity	58 kWh	72.6 kWh	72.6 kWh	72.6 kWh	72.6 kWh
Battery type	Lithium-Ion Polymer with water cooling				
On Board Charger (OBC)	up to 10.5 kWh				
Heat pump air-conditioning system	-	-	-	•	•
CHASSIS & AERODYNAMICS:					
Front suspension	MacPherson strut suspension with coil springs, gas-filled shock absorbers and anti-roll stabiliser bar				
Rear suspension	Multi link with coil springs and gas-filled shock absorbers				
Aerodynamic drag (Cd)	0.291	0.291	0.291	0.296	0.296
WHEELS:					
Wheel size & type	19" x 7.5J Alloy	19" x 7.5J Alloy	19" x 7.5J Alloy	20" x 8.5J Alloy	20" x 8.5J Alloy
Tyre	Michelin 235/55 R19	Michelin 235/55 R19	Michelin 235/55 R19	Michelin 255/45 R20	Michelin 255/45 R20
Tyre Pressure Monitoring System (TPMS)	•	•	•	•	•
Tyre Mobility Kit (TMK)	•	•	•	•	•
Braking system	Power assisted braking system with ventilated front disc and rear disc brakes with ABS, EBD and BAS				
STEERING:					
Electric motor driven power steering	•	•	•	•	•
Manual tilt and telescopic adjustment	•	•	•	•	•
Minimum turning radius - kerb to kerb (m)	5.99	5.99	5.99	5.99	5.99
SAFETY FEATURES:					
ABS braking with Electronic Brake-Force Distribution (EBD)	•	•	•	•	•
Brake Assist System (BAS)	•	•	•	•	•
Electronic Stability Control (ESC)	•	•	•	•	•
Traction Control System (TCS)	•	•	•	•	•
Vehicle Stability Management (VSM)	•	•	•	•	•
Blind-spot Collision Avoidance assist (BCA)	-	•	•	•	•
Blind-spot View Monitor (BVM)	-	-	-	-	•
Rear Cross-traffic Collision Avoidance assist (RCCA)	•	•	•	•	•
Forward Collision Avoidance assist (FCA) with Junction Assist (JX)	•	•	•	•	•
Parking Collision Avoidance assist - reverse (PCA)	-	-	-	-	•
Smart Cruise Control (SCC) with stop & go	•	•	•	•	•
Lane Keeping Assist (LKA)	•	•	•	•	•
High Beam Assist (HBA)	•	•	•	•	•
7 Airbags (dual front, side, curtain & front seat centre airbag)	•	•	•	•	•
Front seatbelt pretensioners and load limiters	•	•	•	•	•
3-point tether child seat anchor points	•	•	•	•	•
ISOFIX child seat anchor points	•	•	•	•	•
Height adjustable seatbelts (front)	•	•	•	•	•
3-point lap diagonal (ELR) seatbelts	•	•	•	•	•
Child safety rear door locks	•	•	•	•	•
Electro Chromatic rear-view Mirror (ECM)	•	•	•	•	•
Automatic dusk sensing headlights	•	•	•	•	•

Specifications

CAR TYPE	IONIQ 5 58 kWh 2WD	IONIQ 5 72 kWh 2WD	IONIQ 5 72 kWh AWD	IONIQ 5 72 kWh Elite 2WD	IONIQ 5 72 kWh Limited AWD
SAFETY FEATURES:					
Rain sensing wiper system	•	•	•	•	•
Rear park assist system	•	•	•	•	•
Front park assist system	•	•	•	•	•
Surround View Monitor (SVM)	-	-	-	-	•
Reversing camera	•	•	•	•	•
First aid kit	•	•	•	•	•
EXTERIOR FEATURES:					
Dual contact solar roof (not available with vision roof)	-	-	-	-	•
Vision roof with retractable blind (not available with solar roof)	-	-	-	-	•
Electrically adjustable side mirrors	•	•	•	•	•
Electric folding side mirrors	•	•	•	•	•
Heated side mirrors	•	•	•	•	•
LED head lights	Bulb type	Bulb type	Bulb type	Projector type	Projector type
LED Daytime Running Lights (DRL)	•	•	•	•	•
LED front centre garnish light	-	-	-	•	•
LED tail lights	•	•	•	•	•
Rear spoiler with high mounted LED stop light	•	•	•	•	•
Privacy glass (rear doors and tailgate)	-	-	-	•	•
Solar UV protection glass	•	•	•	•	•
INTERIOR FEATURES:					
Full eco-leather interior trim **	-	-	-	•	•
Cloth trim	•	•	•	-	-
Leather steering wheel **	•	•	•	•	•
Driver seat 12-way electrically adjustable including full 'relaxion' mode	-	-	-	-	•
Driver seat 8-way electric sliding, reclining, height and lumbar adjustable	•	•	•	•	-
Passenger seat 12-way electrically adjustable including full 'relaxion' mode	-	-	-	-	•
Passenger seat 8-way electric sliding, reclining, height and lumbar adjustable	-	-	-	•	-
Integrated Memory Seat (IMS) system for front & rear seats	-	-	-	-	•
Heated front seats	-	-	-	•	•
Heated rear outboard seats	-	-	-	•	•
Ventilated front seats	-	-	-	-	•
Heated steering wheel	-	-	-	•	•
Power windows	•	•	•	•	•
Wireless smart phone charging ***	•	•	•	•	•
Sliding centre console	•	•	•	•	•
Interior mood lighting	-	-	-	•	•
Rear seat 60:40 split folding function	•	•	•	•	•
Rear seat electric sliding operation	-	-	-	-	•
SECURITY:					
Proximity key and engine start / stop button	•	•	•	•	•
Keyless entry with anti-theft alarm	•	•	•	•	•
Automatic opening flush door handles	-	-	-	•	•
Engine immobiliser	•	•	•	•	•
Hyundai Active Locking Operation (HALO) including speed sensing auto door locking	•	•	•	•	•
COMFORT AND CONVENIENCE:					
12.3" touch screen audio system with Radio, MP3 functionality	•	•	•	•	•
Satellite navigation	•	•	•	•	•
Apple CarPlay & Android Auto compatibility	•	•	•	•	•

Specifications

CAR TYPE	IONIQ 5 58 kWh 2WD	IONIQ 5 72 kWh 2WD	IONIQ 5 72 kWh AWD	IONIQ 5 72 kWh Elite 2WD	IONIQ 5 72 kWh Limited AWD
COMFORT AND CONVENIENCE:					
Bose premium audio system with 8 speakers including subwoofer	-	-	-	•	•
4 speakers and 2 tweeters	•	•	•	-	-
Bluetooth voice recognition handsfree phone system	•	•	•	•	•
Steering wheel mounted audio and cruise controls	•	•	•	•	•
4 USB inputs (2 x front, 2 x rear)	•	•	•	•	•
Dual zone automatic climate control air-conditioning with pollen filter	•	•	•	•	•
Automatic windscreen defog	•	•	•	•	•
Trip computer including distance to empty, average energy consumption, average speed and outside temperature display	•	•	•	•	•
12.3" colour full TFT driver information display	•	•	•	•	•
Illuminated vanity mirror in driver and front passenger sunvisors	•	•	•	•	•
WEIGHTS AND CAPACITIES:					
Boot capacity (VDA litres) - 2nd row seats down	1,587	1,587	1,587	1,587	1,587
Boot capacity (VDA litres) - 2nd row seats up	537	537	537	537	537
Front trunk capacity (VDA litres)	57	57	24	57	24
Kerb weight (kg) lightest / heaviest	1,830 / 1,910	1,910 / 1,990	2,020 / 2,100	1,910 / 1,990	2,020 / 2,100
Towing capacity (unbraked kg)	750	750	750	750	750
Towing capacity (braked kg)	-	1,600	1,600	1,600	1,600
EXTERIOR DIMENSIONS:					
Wheelbase (mm)	3,000	3,000	3,000	3,000	3,000
Overall length (mm)	4,635	4,635	4,635	4,635	4,635
Overall width (mm)	1,890	1,890	1,890	1,890	1,890
Overall height (mm)	1,600	1,600	1,600	1,600	1,600
Wheel track - front / rear (mm)	1,638 / 1,647	1,638 / 1,647	1,638 / 1,647	1,628 / 1,637	1,628 / 1,637
Overhang - front / rear (mm)	845 / 790	845 / 790	845 / 790	845 / 790	845 / 790
Minimum ground clearance (mm)	160	160	160	160	160
SUSTAINABILITY:					
Combined energy efficiency (kWh / 100km)*	16.7	16.8	17.7	17.9	19
Combined fuel economy (litres / 100km)*	N/A	N/A	N/A	N/A	N/A
CO2 emissions (g/km)	0	0	0	0	0
Driving range (WLTP)*	384 km	481 km	460 km	451 km	430 km
WARRANTIES:					
10 year / 200,000 km anti perforation corrosion body warranty	•	•	•	•	•
3 year / 100,000 km mechanical warranty	•	•	•	•	•
3 year / 100,000 km roadside assistance package	•	•	•	•	•
8 year / 160,000 km high voltage battery warranty	•	•	•	•	•
•: Standard -: Not Available					
Specifications, features, equipment and colours shown in this brochure are subject to change without notice or obligation. *Energy consumption figures are based on WLTP tests and factory information. These figures are provided to assist you in comparing the fuel consumption of the IONIQ 5 range with other vehicles. The actual energy consumption will depend on many factors, including your driving habits, the prevailing conditions and your vehicle's equipment, condition and use. **Finishes specified as leather contain a combination of genuine leather, polyurethane leather (leather substitute) and man-made materials. ***Compatible smart phones only.					

Specifications

Type	58.0 kWh (Standard Range)		72.6 kWh (Long Range)			
Motor Type	Permanent Magnet Synchronous Motor (PMSM)		Permanent Magnet Synchronous Motor (PMSM)			
	2WD		2WD		AWD	
Max. Power (kW)	125		160		70 + 155	
Max. Torque (Nm)	350		350		255 + 350	
Battery						
Type	Lithium-Ion		Lithium-Ion			
Capacity (kWh)	58.0		72.6			
Power Output (kW)	195		253			
Energy density (kWh/kg)	156.7		160.2			
Voltage (V)	522.7		653.4			
On Board Charger (OBC)						
Max Capacity (kW)	10.5		10.5			
Output density (kVA/ℓ)	1.28		1.28			
Performance (Single Speed Reduction Gear)		125 kW / 19" Wheel	160 kW / 19"	160 kW / 20"	70 kW + 155 kW / 19"	70 kW + 155 kW / 20"
Max. Speed (km/h)	185		185	185	185	185
Acceleration 0-100 km/h (sec)	8.5		7.4	7.4	5.2	5.2
CO ₂ Emissions / Efficiency / Range						
CO ₂ combined (g/km)	0		0			
Efficiency (Wh/km)	167		168	179	177	190
Driving Range*	384 km		481 km	451 km	460 km	430 km
Charge Time						
Standard	10.5 kW OBC (10-100%)	4 h 59 min (at 10.5 kW)	6 h 09 min (at 10.5 kW)			
Quick Charge	50 kW (10-80%)	43 min 30 sec	56 min 30 sec			
	30 kW (10-80%)	25 mins	25 mins			
Weight						
Kerb Weight (kg)	1,830 – 1,910		1,910 – 1,990		2,020 – 2,100	
Roof Rack Load (kg)	80		80			
Trailer Weight (kg)	w/ Brake	n / a	1,600		1,600	
	w/o Brake	750	750		750	

*Range according to WLTP cycle. Driving range may vary slightly depending on road conditions, your driving style and the temperature. It is also is dependent on the type of tyres equipped.

Dimensions



Interior colours.



Black One-Tone



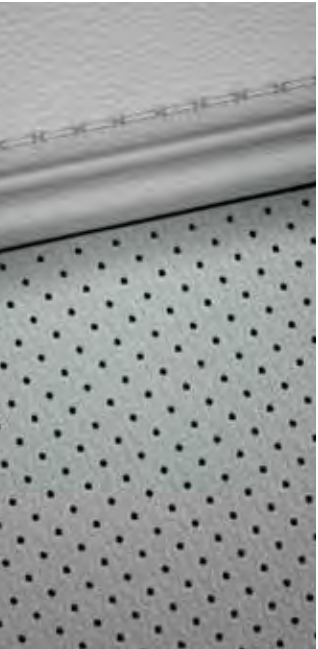
Recycled PET Yarn in Black



Full Eco Leather in Black



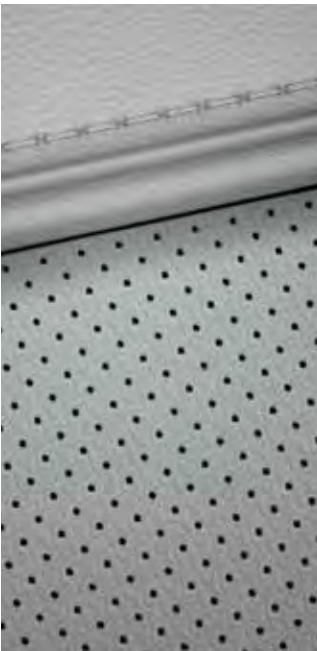
Dark Green / Gray
Available on Elite & Limited models only



Full Eco Leather in Light Gray



Gray Two-Tone
Available on Elite & Limited models only



Full Eco Leather in Light Gray




IONIQ 5 Limited in Gravity Gold shown

The power to do more.

In the past, cars were often seen as something to get us from A to B. But now with EV specific platforms and technology we can do so much more. And with the IONIQ 5 – the options are endless. Create that outdoor cinema you've always dreamed of on your next camping trip or simply take your office on the road. Thanks to its next level smart tech, you can charge your laptop, electric bikes or any other household appliance you want to take with you on the road. So, whatever it is you want to do: IONIQ 5 is here to power your world.

Call our Hyundai Ambassador Team on **0800 HYUNDAI (498 632)**
or email us at customerservice@hyundai.co.nz

 Join Hyundai NZ on Facebook www.facebook.com/hyundainz

 See our videos at www.youtube.com/hyundainz

 Follow us on Instagram @HyundaiNZ

www.hyundai.co.nz

Brochure-Ioniq-5_07/21